

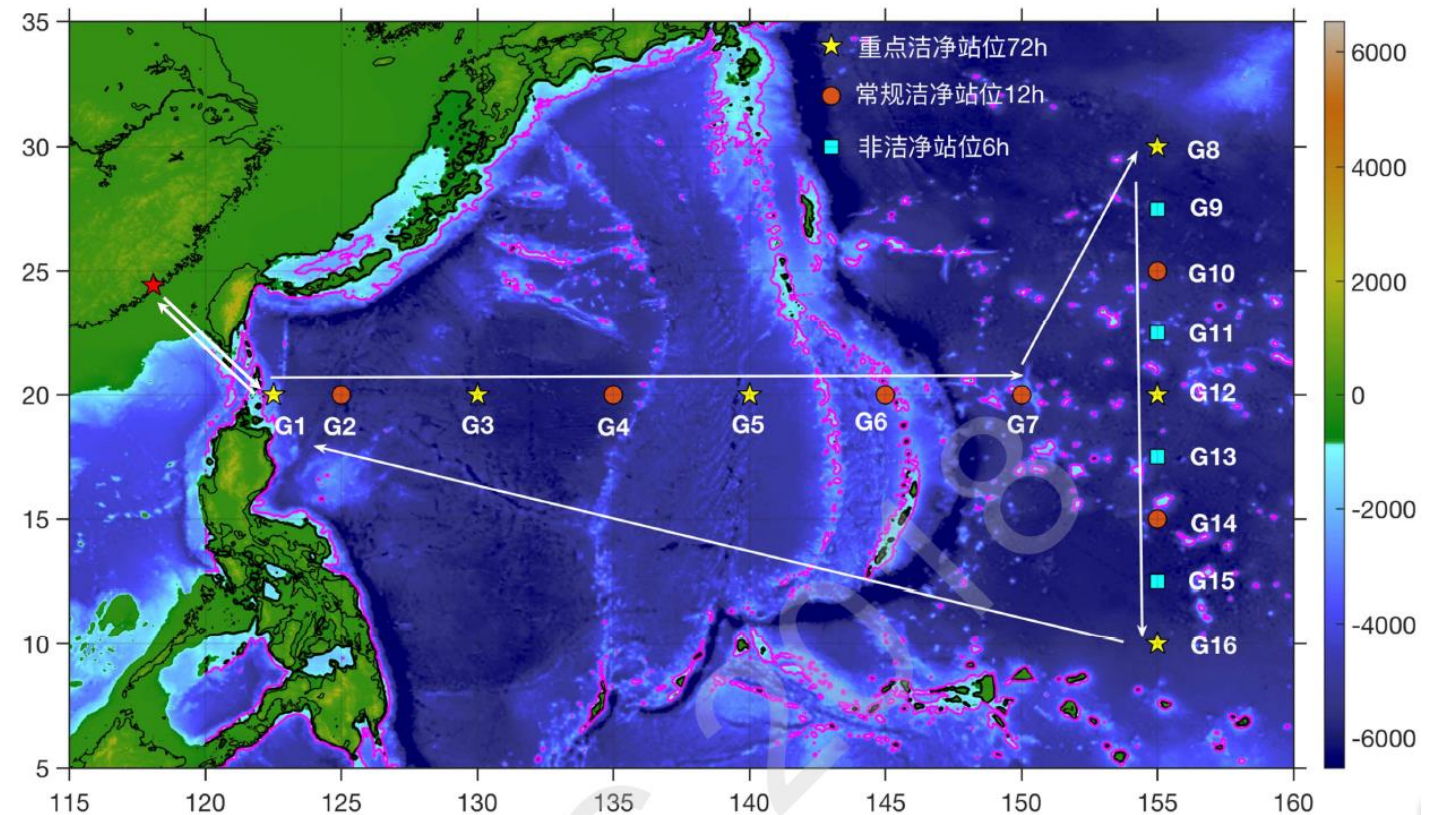
**HOW DO WE BEST UTILIZE EXISTING
PROGRAMS OR RECOMMEND NEW
PROGRAMS TO VALIDATE SATELLITE
APPROACHES FOR DETECTING EPHEMERAL
BLOOMS IN THE SEA?
-INTRODUCTION OF RELEVANT PROJECTS
IN CHINA**

Shaoling Shang
Xiamen University

Projects:

- ✓ CARBON Fixation and Export in oligotrophic ocean
NSFC, 2019- 2023
- ✓ Modelling of Ecosystem Dynamics in the Pacific and the China seas
MOST, 2016-2020

North
Pacific
Subtropical
Gyre

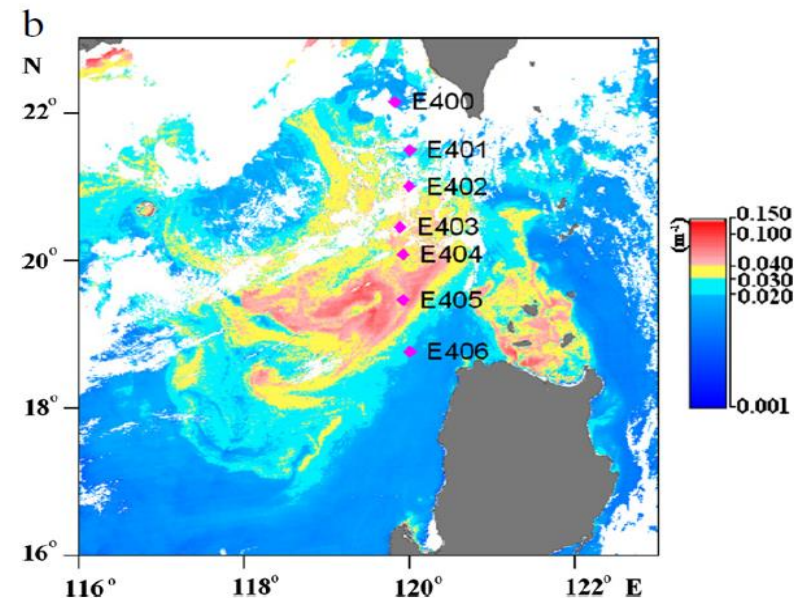


Measurements: Phytoplankton HPLC pigments, IOPs, Rrs, Bio-ARGO

Projects:

- ✓ Development of phytoplankton resolved remote sensing algorithm for estimation of primary production
NSFC, 2019-2023
- ✓ MARine CarbOn sequestration in marginal sea ecosystems
MOST, 2016-2020
- ✓ Phytoplankton community dynamics and its response to coupling interaction between estuarine plume and coastal upwelling in the subtropical marginal sea
NSFC, 2019-2022

South
China Sea
& Taiwan
Strait



Measurements: Phytoplankton HPLC pigments, IOPs, Rrs

Field study : Different ecosystems (shelf-slope-basin-coral reef)

